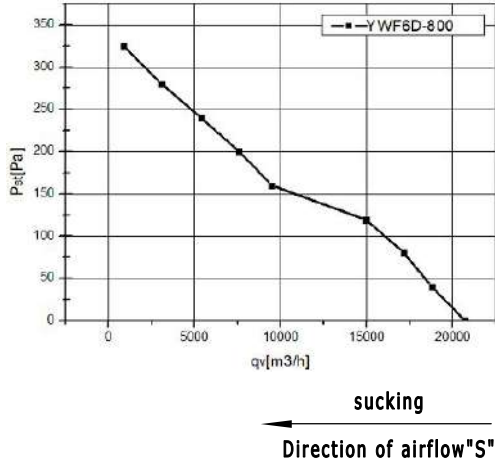
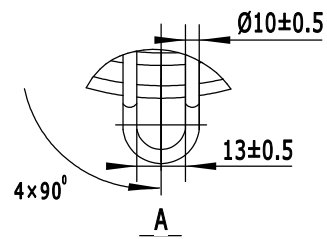
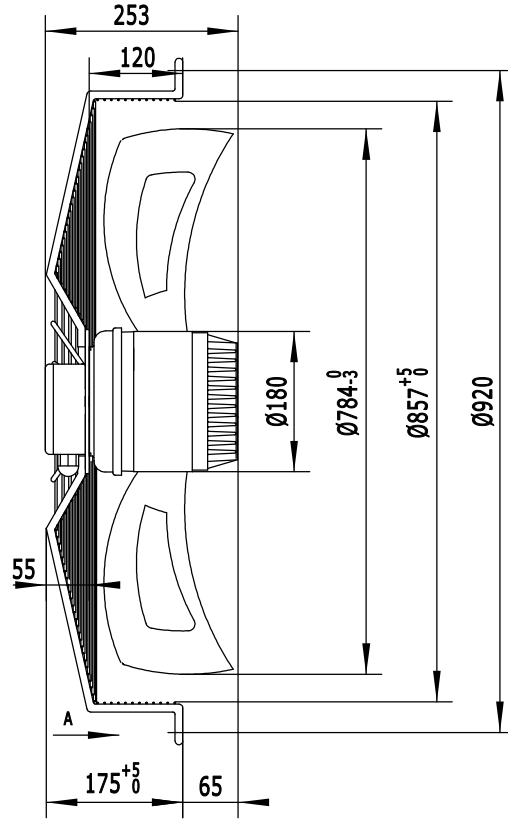


FAN CURVE:

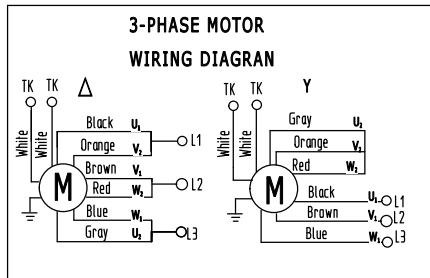


LABEL:

WEIGUANG Axial Fan Motor
YWF6D-800S-180/75-G
 Δ 380V 50Hz 2.85A 968/1200W 920r/min
 Y 380V 50Hz 1.65A 730/930W 770r/min
 CL.F IP54 XX/XX



Wiring diagrams:



WEIGUANG Axial fan motor

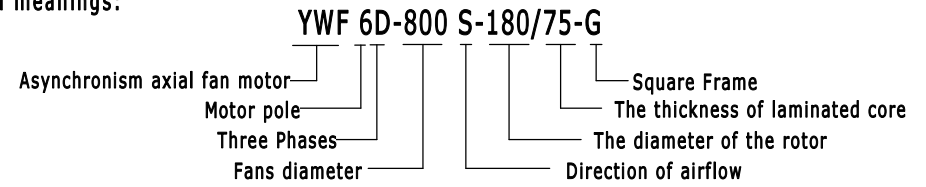
HANGZHOU WEIGUANG ELECTRONIC CO., LTD.

Unit: axial fan motor	Type:
Motor: Three phases motor	Customer:
Motor type: YWF6D-800S-180/75-G	Customer-type:

TYPE	Voltage v	Frequency Hz	Input power W	Current A	Speed r/min +/-5%	Air volume m ³ /h	noise level dBA	capacitor μ F/ VDB
YWF6D-800S-180/75-G	Δ 380	50	1200	2.85	920	19500(20Pa)	75	-
	Y 380	50	930	1.65	770	15000(20Pa)	74	-

Insulation class : F	Operating type: S ₁
Permissible ambient temperature : -30~60℃	Temperature increase: ΔT≤75k
Motor protection:thermocontact 150±5℃	Bearings: ball bearings
	License: CE

Model meanings:



Electrical connection: lead wire Silikon 9G 1.31mm², Length 100mm in terminal box connected
 Direction of rotation: clockwise(sucking), Airflow direction: "S" looking at rotor side

APPROX. WEIGHT

MEANS

REV.	DESCRIPTION	APPROVED	DATE	DECIMAL	TOLERANCE	SIGN	DATE	TITLE	
				X	±0.5	DRN. BY		YWF6D-800S-180/75-G	
				X.X	±0.25	CHD. BY			
				X.XX	±0.15	ENG. BY			
				ANGLE	±3°	APP. BY			
								PROJECTION	
								A4	SCALE
								SHEET: of	