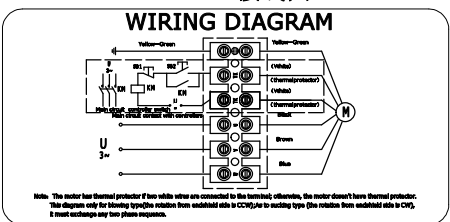


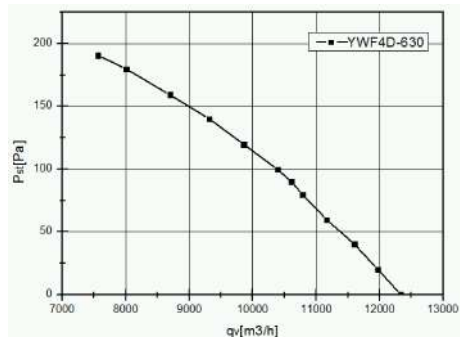
LABEL (铭牌):



WIRING DIAGRAM (接线图):



FLOW RATE CURVE (风量曲线):



ErP2015 LABEL (ErP2015标签):

ErP2015 (N40)
N=46.48 η_{statA} = 40.1%
YWF4D-630S-P137/70

UNIT 类型	Axial fan motor
MOTOR 电机型式	Three phases motor
MOTOR TYPE 电机型号	YWF4D-630S-P137/70-G
VOLTAGE 额定电压 (V)	380
FREQUENCY 频率 (Hz)	50
INPUT POWER 输入功率 (W)	800
CURRENT 电流 (A)	1.60
SPEED 转速 (r/min)	1320
AIR FLOW 20Pa 风量 (m ³ /h)	12000
NOISE 噪音 (dBA)	75
CAPACITOR 电容 (μ F/450V)	-
ROTATION 旋转方向	CW ,looking into the end-shield 顺时针, 从端盖端方向看
INSULATION CLASS 绝缘等级	F
MOTOR PROTECTION 电机保护	Thermocontact 150±5°C 热保护器
TEMPERATURE RISE 温升	75K max 运行温升不超过75K
TYPE OF PROTECTION 防护等级	IP54
OPERATING TYPE 工作定额	S1 连续工作制
AMBIENT TEMPERATURE 适用环境温度	-30°C +60°C
BEARINGS 轴承型式	Ball bearings 滚珠轴承
MOUNTING TYPE 安装方式	Horizontal or Vertical 垂直或水平安装
ELECTRICAL CONNECTION 电源线	Lead wire RV-90 4G 0.75mm ² +2G 0.30mm ² , Length 100mm in terminal box connected 接线盒 (4芯0.75mm ² +2芯0.30mm ² 线长100mm)
APPROVALS 认证标记	CE
NET WEIGHT/GROSS WEIGHT 净重/毛重	15.0/17.0kg
PACKING 包装	67*67*24cm

								SIGN	DATE	TITLE
								DRN. BY		YWF4D-630S-P137/70-G
								CHD. BY		PROJECTION A4
								ENG. BY		
REV.	DESCRIPTION	APPROVED	DATE					APP. BY		SHEET: of