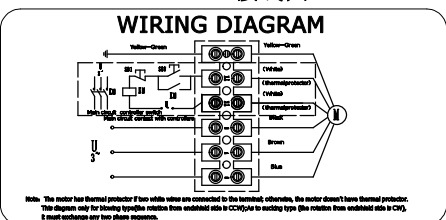


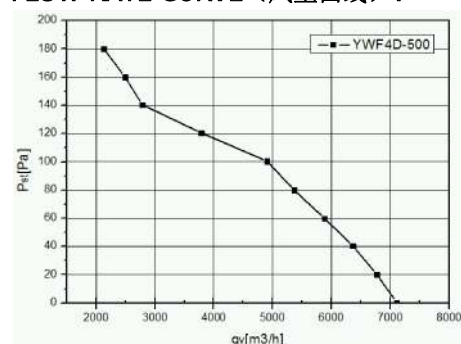
LABEL (铭牌):



WIRING DIAGRAM (接线图):



FLOW RATE CURVE (风量曲线):



ErP2015 LABEL (ErP2015标签):

ErP2015 (N40)
N=41.49 η statA= 32.8%
YWF4D-500S-P137/35

| | |
|-------------------------------|--|
| UNIT 类型 | Axial fan motor |
| MOTOR 电机型号 | Three phases motor |
| MOTOR TYPE 电机型号 | YWF4D-500S-P137/35-G |
| VOLTAGE 额定电压 (V) | 380 |
| FREQUENCY 频率 (Hz) | 50 |
| INPUT POWER 输入功率 (W) | 390 |
| CURRENT 电流 (A) | 0.99 |
| SPEED 转速 (r/min) | 1370 |
| AIR FLOW 20Pa 风量 (m³/h) | 6770 |
| NOISE 噪音 (dBA) | 71 |
| ROTATION 旋转方向 | CW ,looking into the end-shield 顺时针, 从端盖端方向看 |
| INSULATION CLASS 绝缘等级 | F |
| MOTOR PROTECTION 电机保护 | Thermocontact 150±5°C 热保护器 |
| TEMPERATURE RISE 温升 | 75K max 运行温升不超过75K |
| PROTECTION CLASS 防护等级 | IP54 |
| OPERATING TYPE 工作定额 | S1 连续工作制 |
| AMBIENT TEMPERATURE 适用环境温度 | -30°C +60°C |
| BEARINGS 轴承型式 | Ball bearings 滚珠轴承 |
| MOUNTING TYPE 安装方式 | Horizontal or Vertical 垂直或水平安装 |
| ELECTRICAL CONNECTION 电源线 | Lead wire RV-90 4G 0.75mm²+2G 0.30mm² , Length 100mm in terminal box connected 接线盒 (4芯0.75mm²+2芯0.3mm²线长100mm) |
| APPROVALS 认证标记 | CCC、CE |
| NET WEIGHT/GROSS WEIGHT 净重/毛重 | 9.0/10.0kg |
| PACKING 包装 | 55*55*20.5cm |

| | | | | | | | | | | | |
|------|-------------|----------|------|--|--|--|--|--|---------|------|----------------------|
| | | | | | | | | | SIGN | DATE | TITLE |
| | | | | | | | | | | | YWF4D-500S-P137/35-G |
| | | | | | | | | | | | PROJECTION |
| | | | | | | | | | | | A4 |
| | | | | | | | | | | | SCALE |
| | | | | | | | | | | | SHEET: of |
| REV. | DESCRIPTION | APPROVED | DATE | | | | | | DRN. BY | | |
| | | | | | | | | | CHD. BY | | |
| | | | | | | | | | ENG. BY | | |
| | | | | | | | | | APP. BY | | |